

WELCOME  
To  
KMSO!!

# Special Thank You

## OBC Booster Club Officers

President – Katy Kimbel  
Vice President – Vicki Beaman  
Treasurer – Joanne Reed  
Secretary - Jeff Sheldon

## Audit Committee

# Killian Middle School

## Technology Flagship

## LISD Strategic Design

### Project Based Learning

# Orchestra Program Update

2013: Orchestra:X Electric Orchestra

funded by OBC fundraising, school funds, and CHEF

2014: Classroom TV & Apple TV

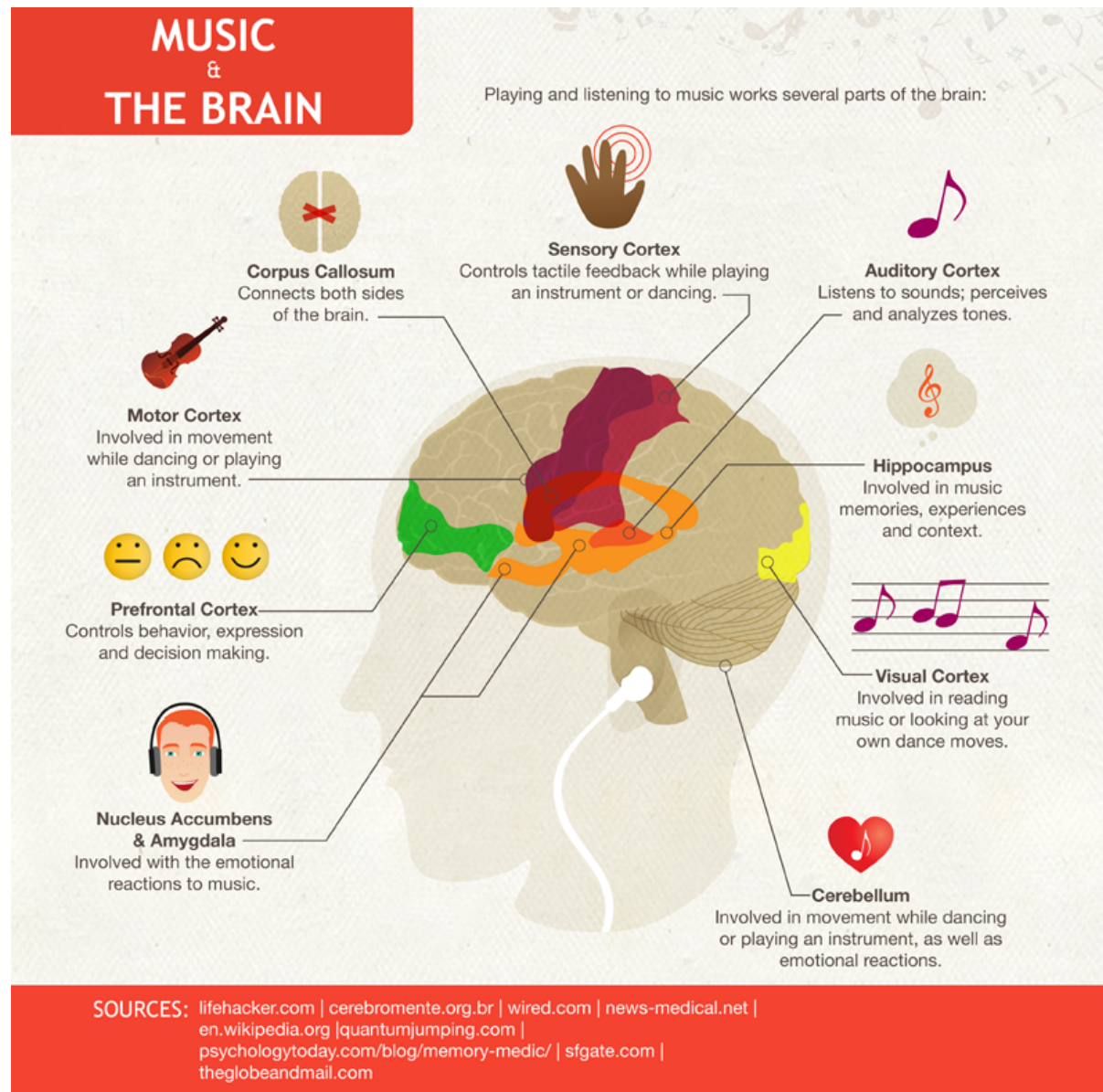
funded by OBC fundraising

Professional Recording Equipment & Camera Crane

funded by CHEF

2015–16: We'll See!!!

# What is so special about orchestra?

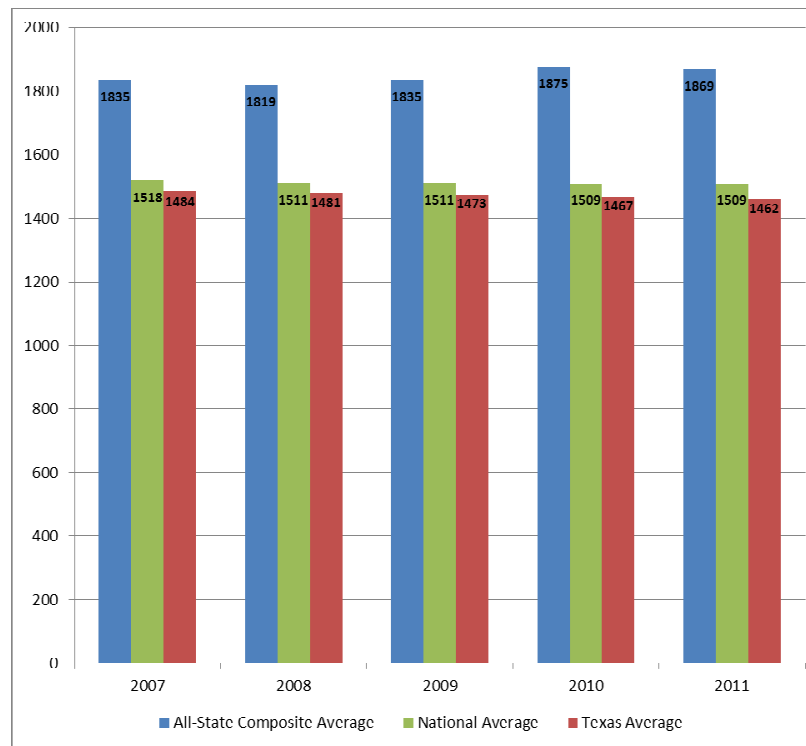




## Five-Year SAT Score Comparison

Texas All-State Musicians Compared to the National and State Average

*Texas All-State musicians have consistently scored about 22% higher than the national average and about 25% higher than the Texas average.*



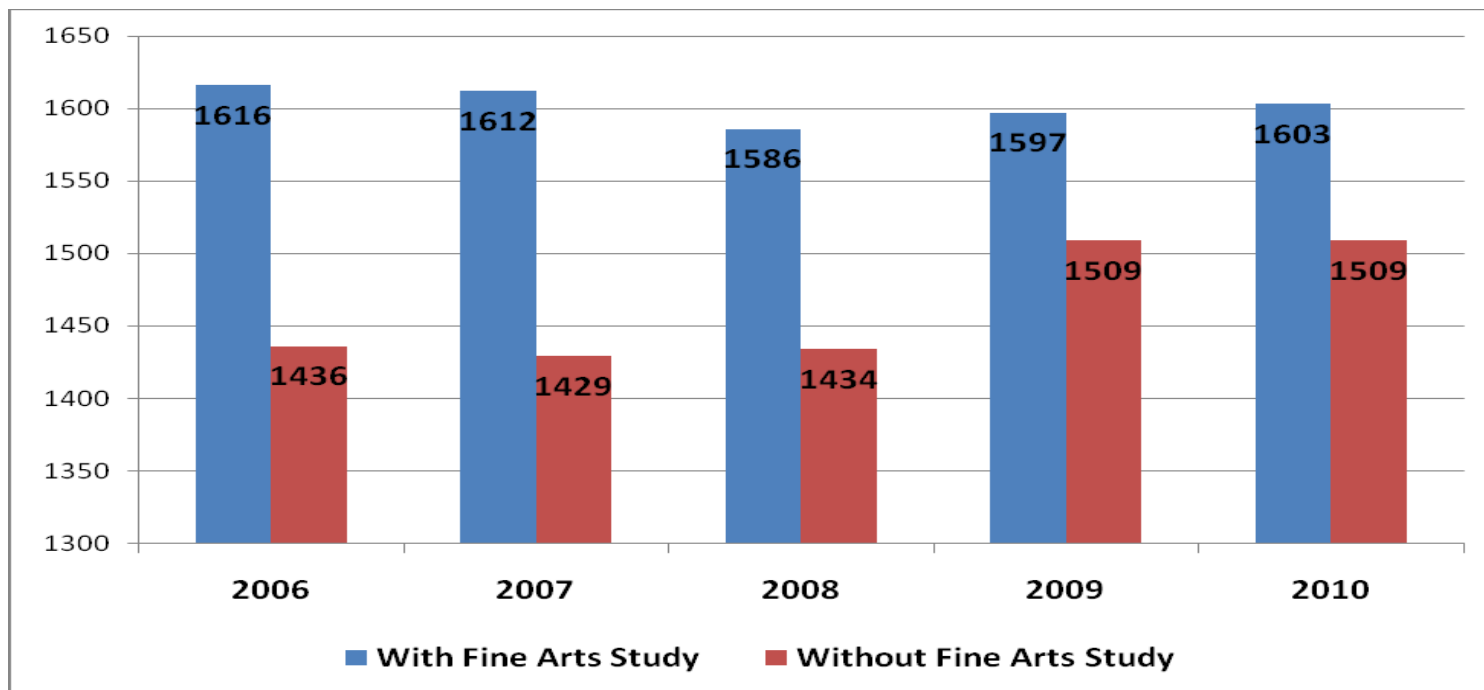
Texas Music Educators Association

7900 Centre Park Drive, Austin, TX, 78754 • (888) 318-TMEA • [www.tmea.org](http://www.tmea.org)

# Is this an accident?

## Students Enrolled in Fine Arts Courses Score Higher on the SAT than those with no Fine Arts Coursework

*Students of the arts continue to outperform their non-arts peers on the SAT, according to reports by the College Entrance Examination Board. Data from the College Board, Profile of College-Bound Seniors National Reports from 2006–2010 show that students enrolled in fine arts courses score from 11 to 13% higher than students not enrolled in any fine arts courses.*



# CHARMS

[www.charmsoffice.com](http://www.charmsoffice.com)

Booster Club receipts and finance  
information



# Killianorchestra.org

Digital hub for social events, reminders,  
calendar, Booster Club, other stuff

**\*\*Send home letters will be minimal\*\***

# Edmodo.com

## Digital hub for Orchestra Class

Join as a parent and follow your student's classes  
automatically

# Volunteering

We need your help! KMSO cannot operate without your help.  
Please consider helping keep our organization strong in  
whatever capacity you can.

LISD.net : Search for Volunteer Form

<http://www.lisd.net>

Volunteer forms are valid for three years

# Events Calendar

Fall Concert: October 15

Winter Concert: December 9

UIL: March 1-2-3

Spring Concert: May 27

We have tons of orchestra events planned this year!

Visit the full calendar at [killianorchestra.org](http://killianorchestra.org)

# Private Lessons

During Class  
or before or after school

Fantastic Private Lesson Staff  
Professional Musicians  
Encourages maximum achievement

Available on all instruments!

# Finances

What are the different fees and where do they go?

# LISD Instrument Fee

\$100 - Cello/Bass Maintenance

Where does this go?

# Booster Club Fee

\$50 – Beginners

\$75 – Advanced Orchestras

The Booster Club Fee funds the essential operations of the orchestra program. 100% of these funds directly supports your student in orchestra.

**\*\*Finances will never exclude any student from the orchestra program.\*\***



## 2014/2015 Operational Budget: \$7000

- Contracted Services
  - Up to \$300 - Clinicians
  - \$600 - Piano Accompanists – Solo & Ensemble
  - \$250 - Spring Concert Drummer
- Travel – Up to \$1000
- Fees
  - \$1000 - Entry Fees for Festivals
  - \$600 – District and Region Entry Fees
  - \$700 - Solo & Ensemble Entry Fees
  - \$250 – Booster Club liability insurance
- Purchases:
  - \$1000 - Music – original music required + three original scores per piece
  - \$135 - Office Supplies – various specific music supplies
  - \$400 – Media
    - 5<sup>th</sup> grade flyers, website, PR materials
  - \$1100 - T-Shirts – used for informal festivals
    - Original KMSO design

# Handbook

# Booster Club